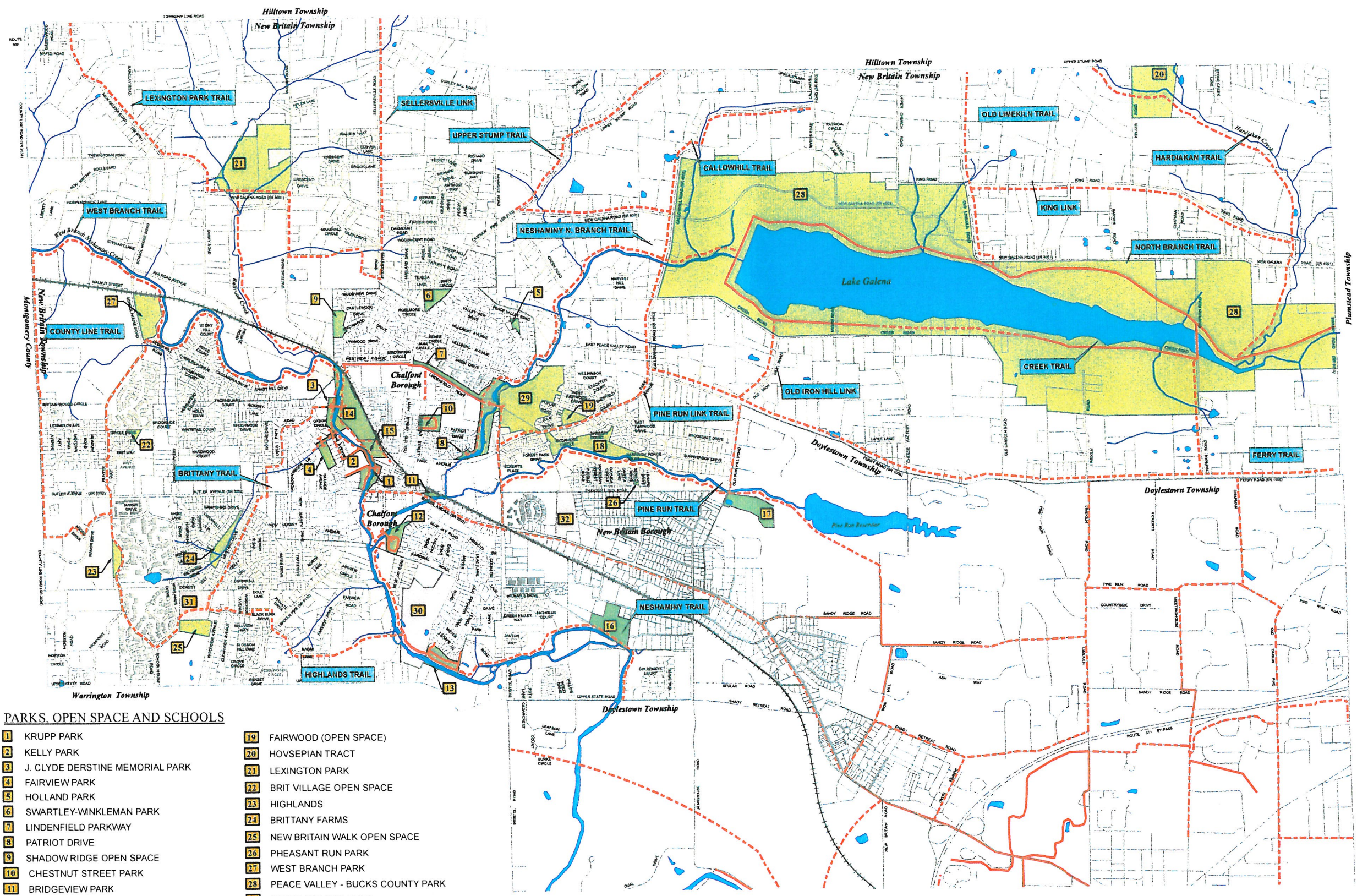




TRI-MUNICIPAL MASTER TRAILS MAP
CHALFONT BOROUGH-NEW BRITAIN BOROUGH-NEW BRITAIN TOWNSHIP

CKS ENGINEERS, INC.
 88 SOUTH MAIN STREET
 DOYLESTOWN, PA 18901
 AUGUST 5, 2005



- PARKS, OPEN SPACE AND SCHOOLS**
- | | |
|---------------------------------------|-------------------------------------|
| 1 KRUPP PARK | 19 FAIRWOOD (OPEN SPACE) |
| 2 KELLY PARK | 20 HOVSEPIAN TRACT |
| 3 J. CLYDE DERSTINE MEMORIAL PARK | 21 LEXINGTON PARK |
| 4 FAIRVIEW PARK | 22 BRIT VILLAGE OPEN SPACE |
| 5 HOLLAND PARK | 23 HIGHLANDS |
| 6 SWARTLEY-WINKLEMAN PARK | 24 BRITANNY FARMS |
| 7 LINDENFIELD PARKWAY | 25 NEW BRITAIN WALK OPEN SPACE |
| 8 PATRIOT DRIVE | 26 PHEASANT RUN PARK |
| 9 SHADOW RIDGE OPEN SPACE | 27 WEST BRANCH PARK |
| 10 CHESTNUT STREET PARK | 28 PEACE VALLEY - BUCKS COUNTY PARK |
| 11 BRIDGEVIEW PARK | 29 NORTH BRANCH PARK |
| 12 CHALFONT COMMUNITY PARK (BLUEJAY) | 30 UNAMI MIDDLE SCHOOL |
| 13 LENAPE LANDING | 31 BUTLER ELEMENTARY SCHOOL |
| 14 PENNDOT WETLANDS PRESERVATION AREA | 32 PINE RUN ELEMENTARY SCHOOL |
| 15 CHALFONT BOROUGH OPEN SPACE | |
| 16 WILMA QUINLAN NATURE PRESERVE | |
| 17 COVERED BRIDGE PARK | |
| 18 FORREST PARK | |

TRI-MUNICIPAL MASTER TRAILS MAP
CHALFONT BOROUGH-NEW BRITAIN BOROUGH-NEW BRITAIN TOWNSHIP

- Legend**
- PROPOSED TRAIL
 - EXISTING TRAIL
 - SCHOOLS
 - SEPTA RAILROAD LINE
 - PARKS
 - ⌘ PROPOSED PEDESTRIAN BRIDGE

